



2021

Call for Entries

STUDENT
AWARDS

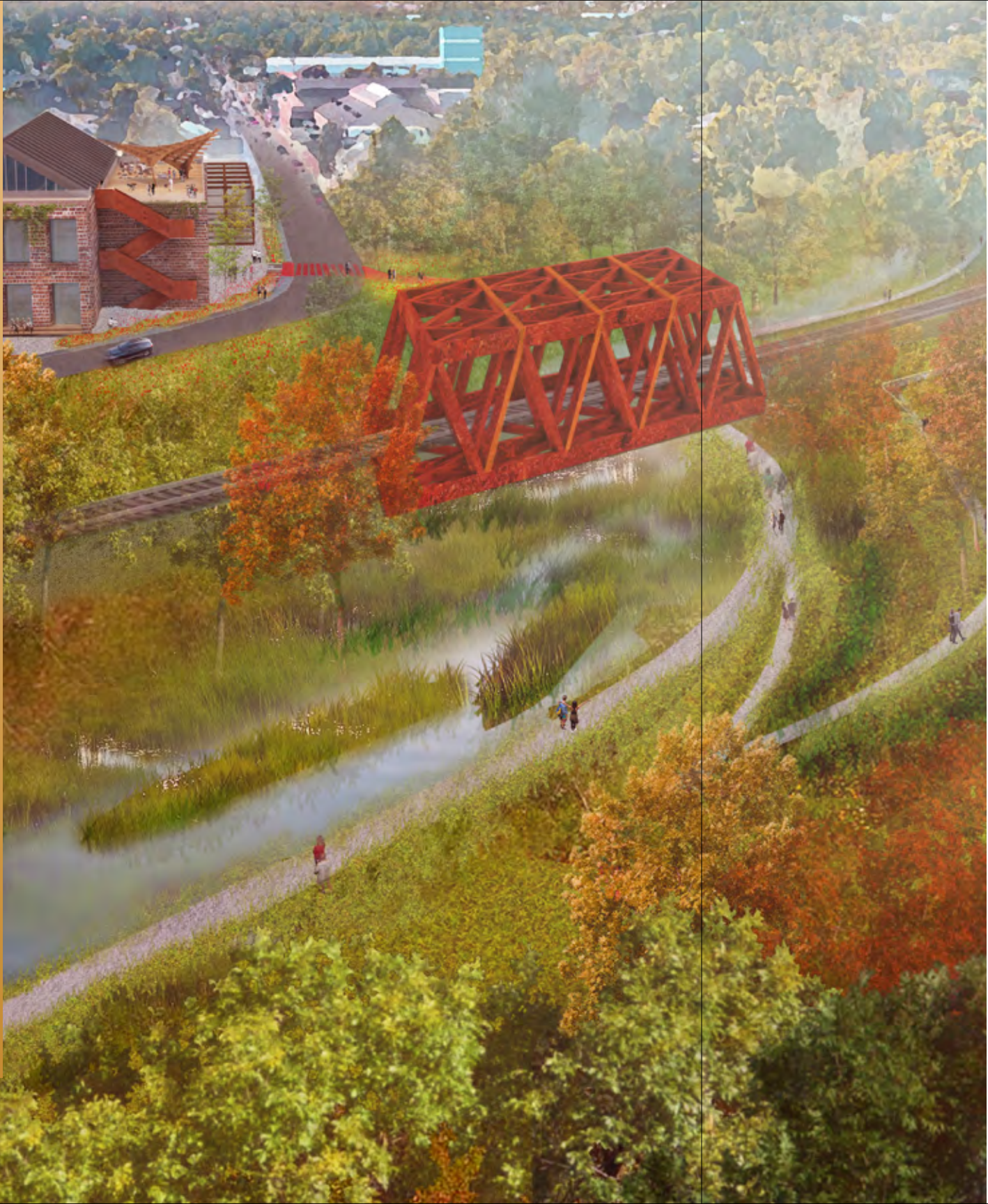
American Society of
Landscape Architects

Entry fees are due May 14, 2021
Submission deadline is May 24, 2021

www.asla.org/2021CFE

Each year, the ASLA Student Awards give us a glimpse into the future of the profession.

Award recipients receive featured coverage in *Landscape Architecture Magazine*, the magazine of ASLA, and in many other design and construction industry and general interest media. Award recipients, their clients, and advisors will be honored at the awards presentation ceremony during the ASLA Conference on Landscape Architecture in 2021.



ASLA FUND

The ASLA Fund is the 501(c)(3) charitable foundation of the American Society of Landscape Architects, supported by the tax-deductible contributions of ASLA members and other individuals and organizations, and committed to the careful stewardship and artful design of our cultural and natural environment. The Fund’s mission is to expand the body of knowledge of the landscape architecture profession and increase public understanding of environmental and land-use issues and principles. Its work supports public and professional education and outreach, professional and student awards programs, and special projects that provide real-world demonstrations of core values like the ASLA Center for Landscape Architecture.



(opposite)
2020 Student Collaboration
Honor Award
**Lehigh Valley Catalyst:
Reconnecting Communi-
ties to the Lehigh River’s
History and Ecology**
University of Pennsylvania
(Photo: PennPraxis)

STUDENT AWARDS JURY

The prestige of the ASLA awards program relies in large part on the high caliber of the juries convened each year to review submissions. The ASLA Honors and Awards Advisory Committee seeks to assemble juries that represent the breadth of the profession, including private, public, institutional, and academic practice, and exemplify diversity in professional experience, geography, gender, and ethnicity.

Jury Chair
Diane Jones Allen, FASLA
Design Jones LLC
Arlington, TX

Magdalena Aravena, ASLA
Lamar Johnson Collaborative
Chicago, IL

Jane Berger
Freelance Journalist
Washington, DC

Rebecca Bradley, ASLA
Cadence
Fort Lauderdale, FL

L. Irene Compadre, ASLA
Arbolope Studio
St. Louis, MO

Gabriel Diaz Montemayor, ASLA
University of Arkansas
Fayetteville, AR

Jessica Henson, ASLA
OLIN
Los Angeles, CA

Radhika Mohan
Enterprise Community Partners
Washington, DC

Paola Moya, ASSOCIATE AIA
Moya Design Partners
Washington, DC USA

GENERAL
DESIGN



Recognizes: Site-specific works of landscape architecture. Entries are not required to be built.

Typical entries include: Single-site public, institutional, or private landscapes of all kinds (except entries qualifying for urban design or residential design categories); projects that include historic preservation, reclamation, or conservation; green roofs, stormwater management, sustainable design; design for transportation or infrastructure; landscape art or installation; interior landscape design; and more.

Criteria: The jury will consider the quality of design and execution; design context; environmental sensitivity and sustainability; hazard mitigation, climate adaptation, and resilience strategies; and design value to the client, community, and to other designers.

RESIDENTIAL
DESIGN



Recognizes: Site-specific works of landscape architecture for residential use that elevate the design principles of quality, context/place, environmental responsibility, maintenance requirements and durability. Innovative design and construction techniques that help to reduce overall construction and maintenance costs will also be recognized. Entries in this category are not required to be built.

Typical entries include: Single or multifamily residential projects; activity areas for cooking, entertaining, recreation, or relaxation; sustainable landscape applications; new construction or renovation projects; historic preservation; new urbanism projects with multifamily development; projects located in Opportunity Zones; and more.

Criteria: The jury will consider the quality of design context and execution, materiality, environmental sensitivity, community benefit, sustainability through Low Impact Development (LID) incorporation, green infrastructure or additional site specific techniques that are innovative.

ANALYSIS &
PLANNING



Recognizes: The wide variety of professional activities that lead to, guide, and evaluate landscape architecture design. Entries in this category are not required to be built or implemented.

Typical entries include: Urban, suburban, rural, or regional planning efforts; development guidelines; transportation, town, or campus planning; plans for reclamation of brownfield sites; environmental planning in relation to legislative or policy initiatives or regulatory controls; cultural resource reports; natural resources protection; historic preservation planning; and more.

Criteria: The jury will consider the quality of the analysis and planning effort; context; environmental sensitivity and sustainability; likelihood of successful implementation; and value to the client, the public, and other designers.

RESEARCH



Recognizes: Research that identifies and investigates challenges posed in landscape architecture, providing results that advance the body of knowledge for the profession.

Typical entries include: Investigations into methods, techniques, or materials related to the practice of landscape architecture; studies of relationships of landscape architecture to law, education, public health and safety, or public policy; and more.

Criteria: The jury will consider how the research is framed; the context and resources of the study; the methods of inquiry; the results of investigation; and the value to the field at large.

URBAN DESIGN



Recognizes: The Urban Design Category recognizes projects that activate networks of spaces that mediate between social equity, economic viability, infrastructure, environmental stewardship, and beautiful place-making in the public and private realm. Entries in this category are not required to be built or implemented.

Typical entries include: Conceptualized urban projects spatially greater than one block in the realm of public, institutional, or private landscapes; streetscapes, waterfronts, mixed-use developments, neighborhoods, districts, cities, placemaking interventions and civic improvements that may include elements of reclamation, stormwater management, transportation or infrastructure studies, art, etc.

Criteria: The jury will consider the quality of design; urban design context; planning context; contribution of project to a broader urban landscape; environmental sensitivity and sustainability; and attention to social justice, equity, and inclusion.

COMMUNICATIONS



Recognizes: Achievements in communicating landscape architecture works, techniques, technologies, history, or theory, and the lesson value to an intended audience.

Typical entries include: Print media, film, video, audio, CD, or DVD formats; online communications; interpretive design; exhibition design; and more. Supplemental materials are required and should be sent directly to the ASLA awards program prior to the submission deadline.

Criteria: The jury will consider the effectiveness of the message presentation, the innovation in approach or delivery, and the value to the intended audience.

Note: Submissions in this category are not blind.

THE STUDENT
COMMUNITY
SERVICE AWARD



Recognizes: *Pro bono* community service by students demonstrating sound principles and values of landscape architecture.

Typical entries include: Individual students, student teams, or student organizations providing *pro bono* community-based advocacy or public service.

Criteria: The jury will consider the effectiveness related to the service and the demonstration value to other communities, students, and professionals.

STUDENT
COLLABORATION



Recognizes: Collaborative work by landscape architecture students with students from complementary disciplines, including those in other design fields, business, the natural and social sciences, and more. Student entries are not required to be built.

Typical entries include: Landscape architecture projects that meet the criteria within the categories of General Design, Residential Design, Analysis and Planning, Research, Communications, Urban Design, and Community Service brought about through collaborative effort among students from landscape architecture programs and complementary disciplines.

Criteria: Projects submitted in this category must be team projects; each team must include at least one landscape architecture student and one non-landscape architecture student. The jury will evaluate the project under the criteria outlined in the appropriate category and will also consider the demonstration of collaboration among the disciplines represented on each team.

Eligibility

The official entrant must be a Student, Student Affiliate, or first-year Associate member of ASLA or eligible to join ASLA in one of those categories in order to enter. In addition, ASLA members who have returned to school and are enrolled in an accredited full-time landscape architecture program are also eligible to enter the Student Awards.

With the exception of the Student Collaboration Category, student entries may be individual or team efforts.

The jury process is “blind.” In other words, the identities of the entrant and creative team are not revealed to the jury. (The exception to this is the Communications category, in which the identities of the entrant and creative team are revealed to the jury.) Members of the Student Awards Jury will recuse themselves from judging any entries with which they have a conflict of interest (for example, a juror who teaches in a landscape architecture program will not judge entries submitted by students from that program). ASLA retains the right to disqualify any entry that does not meet the program requirements or that presents a conflict of interest. In such cases, refunds will not be issued.

Student membership with ASLA is now free! For information on membership qualifications, please visit asla.org/membership or call 1-888-999-ASLA.

Recognition

The Student Awards Jury may each select one Award of Excellence and any number of Honor Awards in the General Design, Residential Design, Analysis and Planning, Communications, Research, Urban Design, Student Community Service, and Student Collaboration categories.

(opposite)
2020 General Design
Honor Award
**The Siltcatcher:
A Sediment-Capture
System for Wetland
Creation and Coastal
Protection in Western
Lake Pontchartrain**
Louisiana State University
(Photo: Andrew Wright,
STUDENT ASLA)

Deadlines & Information

2021 Deadline
Visit www.asla.org/2021CFE to enter.

Entry fees are due May 14, 2021.
All submissions are due by 11:59 pm PST
on May 24, 2021.

Entry	Fee
ASLA Member	\$55
Non-member*	\$110 for first entry \$55 each additional entry
International surcharge fee for Non-members	\$50

*Non-members entering multiple projects may pay the non-member fee for the first entry and the member fee for any additional entries.

Refunds
Refunds for award entry fees must be requested in writing to honorsawards@asla.org before April 23, 2021.

Award Selections & Announcements
The Student Awards Jury will review all eligible submissions. Entrants will be notified of the results shortly following the jury meetings. The awards will be announced to the media in coordination with coverage in *Landscape Architecture Magazine*.

Recipients will be honored at the awards presentation ceremony during the 2021 ASLA Conference on Landscape Architecture. Official entrants receiving Honor Awards or Awards of Excellence in the Student Awards Program will receive a complimentary registration to the ASLA 2021 Landscape Architecture Conference, (\$295 value). In addition, official entrants who receive an Award of Excellence in the Student Awards program will receive travel and hotel accommodations for the conference.

Questions?
Contact, Honors and Awards Manager
202-216-2331
honorsawards@asla.org

Award Winner Banners

Recipients of a 2021 ASLA Student
Award will receive an official banner for
use on their digital marketing material.





American Society of
Landscape Architects

636 EYE STREET NW
WASHINGTON, D.C.
20001-3736

1-888-999-ASLA
202-898-2444
www.asla.org



The American Society of
Landscape Architects Fund

LANDSCAPE ARCHITECTURE MAGAZINE

Photo Credits

FRONT COVER:

2020 Urban Design
Honor Award

**Community Catalyst: Building A
Network of Public Spaces for
Sanitation and Social Inclusion
in Winneba, Ghana.**
(Photo: Xinhui Chen)

AWARDS CATEGORIES (LEFT TO RIGHT)

2020 General Design
Honor Award

The Foodway
University of Arkansas
(Photo: Jacob Costello, ASSOCIATE ASLA)

2020 Residential Design
Award of Excellence

**Informality as Filter: A Renewed
Land Sharing Plan for Khlong Toei
Community**

Harvard University Graduate School
of Design
(Photo: Tina Yun Ting Tsai,
STUDENT ASLA)

2020 Analysis and Planning
Award of Excellence
**West Oakland: From T.O.D to
F.O.D | Food Oriented Development
on Transportation Legacy**
University of California, Berkeley
(Photo: Lide Li, STUDENT AFFILIATE ASLA)

2020 Research
Honor Award
**Learn, Play, Thrive—Design Guide-
lines and Toolkit of Therapeutic
Gardens for Children with Autism
Spectrum Disorder**
University of California, Davis
(Photo: Wenxi Huang, STUDENT ASLA
National Autism Association,
<https://nationalautismassociation.org>)

2020 Residential Design
Award of Excellence
**Informality as Filter: A Renewed
Land Sharing Plan for Khlong Toei
Community**
Harvard University Graduate School
of Design
(Photo: Tina Yun Ting Tsai,
STUDENT ASLA)

2020 Communications
Award of Excellence
Jia
California Polytechnic State University,
San Luis Obispo
(Photo: July Aung, STUDENT ASLA)

2020 Student Community Service Award
Award of Excellence
**Le Garden: A Space for the Welfare
and Happiness of Seniors and the
Community**
Anhui University, Department of Design,
College of Art
(Photo: Peng Chen, STUDENT
INTERNATIONAL ASLA)

2020 Student Collaboration
Award of Excellence
Designing a Green New Deal
University of Pennsylvania
(Photo: Designing a Green New Deal,
University of Pennsylvania)

BACK COVER:

ASLA 2019 Student Awards
(Photo: EPNAC)

